

RICOH

Advanced, Flexible & Easy to Use Document Managers



Aficio™ MP 2510/MP 3010

Customise & Meet your Every Need

Would you like to cut down the costs of your normal document handling processes and at the same time speed up your entire workflow? To make this happen, you need the right tools. The new Aficio™MP 2510/MP 3010 are highly advanced document management systems that combine multiple functionalities to streamline your workflow. Whether you need a basic walk-up copier or a full suite of multifunctional capabilities, these systems can be customised at your command. You obtain exactly the tools you require to reach your goals. In addition, you obtain the leading-edge strengths Ricoh stands for: easy operation and maintenance, high speeds, advanced security and state-of-the-art printing, scanning and distribution possibilities. With the Aficio™MP 2510/MP 3010, you can meet any challenge, future wishes taken into account.

- Top productivity through high output speeds (25/30 ppm)
- Straightforward operation through large LCD touch screen
- Range of available printer configurations & full customisation possibilities
- Variety of finishing options at your disposal
- Advanced printing & security



Intelligent Information Processing

How can you cut costs while improving your document handling? With developments in the field of communication and document management increasing day by day, you need a progressive solution. Combining the right hardware with the latest software, the Aficio™MP 2510/MP 3010 fit in seamlessly. Minimum investment, maximum return on it.



Prevent a huge e-mail inbox and enjoy the opportunity to download files at a later time: 'scan to URL' allows you, as receiver, to check the e-mail and decide whether and when to download the file.

Fast & Powerful

Current office demands are increasing. Imagine having a copy device that matches your current needs and accommodates future growth? With speeds of 25/30 pages per minute equaling duplex speeds, no valuable time is wasted. Warm up is incredibly fast too at 12 seconds while your first copy is in the output tray in 4.4 seconds.

Custom Made

Whether you work in a small workgroup or larger office environment, your needs with regards to office equipment are diverse yet precise. At Ricoh, we simply build a customised system around your workflow to suit your exact document processing needs. Various printer configurations are available for lower as well as higher print volumes. Should you require extra functionality at a certain point, capabilities can easily be added. A printer/scanner unit, a fax module, finishers, extra paper trays, software packages... basically anything is possible.

Advanced Printing

How easy would it be if you could be assured that when you print confidential documents, they stay secret? Locked Print™ makes sure the machine keeps your document until you release it with your password. To avoid prints being left on the tray and eliminate paper waste, the Hold Print function is very helpful. Should you choose the systems' Adobe® PostScript® 3™ option, you obtain PDF Direct Print, a handy tool to reduce network traffic and increase total productivity.

Handy Workflow Tools

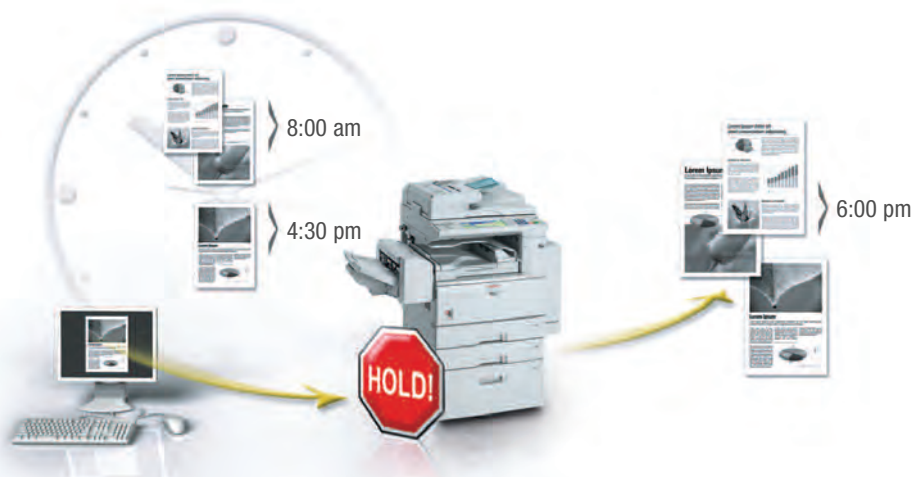
To be able to handle your document workflow professionally, several document management utilities are available. You can store frequently used copy, print, fax and scan documents on the machine's document server for re-use. Using DeskTopBinder™ Lite, you can merge documents of different formats into one file and view, print and re-distribute it all digitally.

Efficient Document Distribution

For a well-structured document workflow, distribution tools have become necessary. If you need to send digitised files, 'scan to e-mail' is available. Should you need to send large files, you can do so via 'scan to folder' and send up to 2 GB. As third option, 'scan to URL' allows you, as receiver, to check the e-mail and decide whether and when to download the file. This prevents a huge e-mail inbox and offers the opportunity to download files at a later time.

Safeguard Access & Information

As office products have turned into advanced network devices, security threats have become a major concern. The Aficio™MP 2510/MP 3010 offer Windows® authentication which allows a user with access to the regular network, to also access the MFP. Other authentication methods have been developed to suit any network environment. To safeguard the data on the Hard Disk Drive, a Data Overwrite Security function is applicable. This unit ensures the hidden temporary data is overwritten with random data after completion of a job. Any security threat will be eliminated!



The Aficio™MP 2510/MP 3010 can hold print jobs you send during the day together with their settings. You simply release them on the device at a convenient time. As a 'virtual mailbox', this function prevents mixed-up output and keeps your prints confidential.

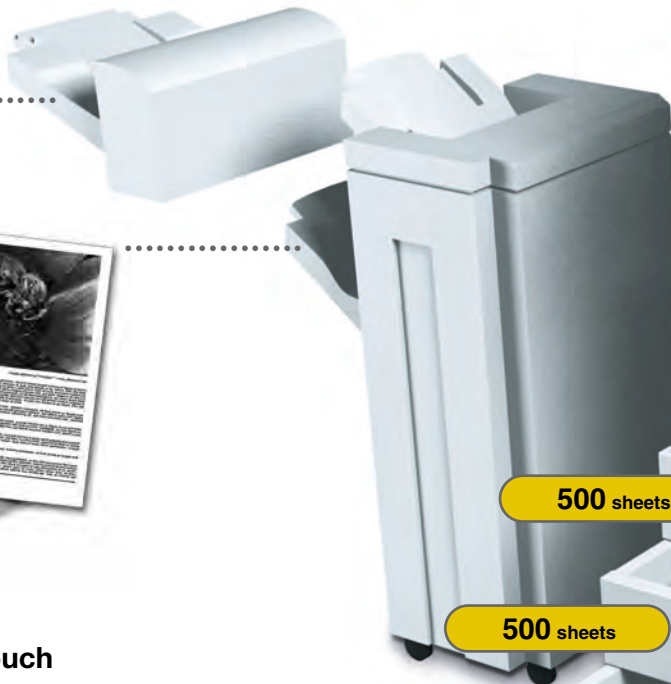
Streamline your Entire Workflow

How can you improve your workflow, make it smoother and more productive? The Aficio™MP 2510/MP 3010 provide inventive answers to the challenges you face in the office. With advanced functionalities and excellent speeds to name but a few, you obtain world-class power in a small package.



User Friendly Multi Page Input

To copy or scan large jobs and documents up to A3 size in one run, the Aficio™MP 2510/MP 3010 boast a fast feeding 50-sheet ARDF. Books and magazines, on the other hand, can be copied straight from the platen glass.



The Finishing Touch

To keep your document creation in house and save time and costs, the Aficio™MP 2510/MP 3010 can be equipped with one out of two finishers for professional looking output.

Continuous Operation

Large print or copy jobs are easily taken care of by the systems' impressive maximum paper capacity of 3,100 sheets. Refills are down to an absolute minimum. As the systems alert you in case paper or toner run out, you keep a constant status overview of your network devices.

500 sheets

500 sheets

2,000 sheets



The image on these pages is not a real photograph and slight differences in detail might appear.



Efficient Business Faxing

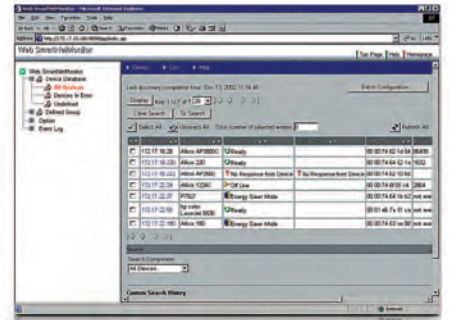
- save time and provide better output quality at the receiving end by sending fax messages directly from your own PC (LAN fax)
- reduce the distribution of printed faxes by transmitting them via the local network or forwarding them to any e-mail address
- register and maintain your fax/e-mail address book (LDAP) in the Hard Disk Drive (HDD) directly from the operation panel or through Web SmartDeviceMonitor™/ Web Image Monitor

Straightforward Operation

The Aficio™MPP 2510/MP 3010 stand for efficient document handling. The systems' large LCD touch screen intuitively guides you through all copy, print, fax and scan jobs. In fact, all of Ricoh's multifunctional devices are operated in the same way: if you can use one system, the others present no surprises.

Advanced Device Monitoring

Using Web SmartDeviceMonitor™, the status of networked peripherals can be monitored and checked through web browsers. Additionally, IT managers and network administrators can set user privileges, obtain complete job statistics and restrict usage.



Excellent Network Connectivity

The Aficio™MPP 2510/MP 3010 suit virtually any network environment. A NIB and USB interface come standard embedded in the printer controller board. For optimum connectivity, Bluetooth, Wireless LAN and bi-directional IEEE 1284 are optionally available.

Our Earth, Our Tomorrow

Like all Ricoh products, the Aficio™MPP 2510/MP 3010 reflect Ricoh's commitment to the environment with the usage of toxic free materials (prohibiting lead, chromium, cadmium, as well as PVC)*. Low energy toner production adds to their environment conscious design. Significant energy savings are obtained thanks to advanced new power saving modes.

* In compliance with EU directive on Restriction of Hazardous Substances (RoHS, effective from July 2006).





Aficio™ MP 2510/MP 3010

Specifications



COPIER

| | | |
|-------------------------|--|--------------------------------|
| Copying process: | Twin laser beam scanning & electro photographic printing | |
| Copy speed: | 25/30 copies per minute | |
| Resolution: | 600 dpi | |
| Multiple copy: | Up to 999 | |
| Warm up time: | 12 seconds | |
| First output speed: | 4.4 seconds | |
| Zoom: | 25 - 400% (in 1% steps) | |
| Memory: | Standard: | 128 MB |
| | Maximum: | 384 MB + 40 GB Hard Disk Drive |
| Paper input capacity: | Standard: | 2 x 500-sheet paper trays |
| | Maximum: | 3,100 sheets |
| Paper output capacity: | Standard: | 500 sheets |
| | Maximum: | 1,625 sheets |
| Paper size: | A6 - A3 | |
| Paper weight: | Paper tray 1: | 60 - 105 g/m ² |
| | Paper tray 2/bypass tray: | 52 - 157 g/m ² |
| | Duplex tray: | 64 - 105 g/m ² |
| Dimensions (W x D x H): | 550 x 604 x 980 mm | |
| Weight: | Less than 62 kg | |
| Power source: | 220 - 240 V, 50/60 Hz | |
| Power consumption: | Operation: | Maximum 1.32 kW |
| | Energy saver mode: | Less than 120 W |

PRINTER/SCANNER (option)



Printer

| | | |
|-------------------------|---|--|
| Print speed: | 25/30 prints per minute | |
| Printer language: | Standard: | PCL5e, PCL6, RPCS™ |
| | Option: | Adobe® PostScript® 3™ |
| Resolution: | Maximum 600 x 600 dpi | |
| Interface: | Standard: | USB 2.0 |
| | Option: | Ethernet 10 base-T/100 base-TX Bi-directional IEEE 1284 Wireless LAN (IEEE 802.11b) Bluetooth |
| Memory: | 384 MB + 40 GB Hard Disk Drive | |
| Network protocol: | TCP/IP, IPX/SPX, SMB, AppleTalk | |
| Supported environments: | Windows® 95/98/Me/NT4.0/2000/XP/Server 2003 | |
| | Novell® NetWare® 3.12/3.2/4.1/4.11/5.0/5.1/6/6.5 | |
| | UNIX Sun® Solaris 2.6/7/8/9/10 | |
| | HP-UX 10.x/11.x/11iv2 | |
| | SCO OpenServer 5.0.6/5.0.7 | |
| | RedHat® Linux 6.x/7.x/8.x/9.x/Enterprise | |
| | IBM® AIX v4.3/5L v5.1/5L v5.2/5.3 | |
| | Macintosh 8.6 or later (OS X Classic) | |
| | Macintosh X v10.1 or later (native mode) | |
| | SAP® R/3® (3.x or later) | |
| | NDPS Gateway Netware 5.1 (SP8 or later) | |
| | 6.0 (SP5 or later)/6.5 (SP3 or later) | |
| | IBM® iSeries / AS/400 using OS/400 Host Print Transform | |



Scanner

| | |
|------------------------|--|
| Scan speed: | Maximum 52 originals per minute (MH, A4/LEF) |
| Resolution: | Maximum 600 dpi (TWAIN: 1,200 dpi) |
| Original size: | A5 - A3 |
| Bundled drivers: | Network TWAIN |
| Scan to e-mail: | SMTTP, TCP/IP |
| Destination addresses: | Maximum 500 per job (stored: maximum 2,000) |
| Address book: | Via LDAP or locally on Hard Disk Drive |
| Scan to folder: | SMB, FTP, NCP protocol (with login security) |
| Destination: | Maximum 50 folders per job |



Software

SmartDeviceMonitor™, Web SmartDeviceMonitor™ 2
Web Image Monitor, DeskTopBinder™ Lite



RPCS™ PRINTER UNIT (option)

| | | |
|-------------------|-------------------------|------------------------------------|
| Print speed: | 25/30 prints per minute | |
| Printer language: | Standard: | RPCS™ |
| | Option: | PCL5e, PCL6, Adobe® PostScript® 3™ |
| Resolution: | Maximum 600 x 600 dpi | |



FAX (option)

| | | |
|---------------------|--|------------------------|
| Circuit: | PSTN, PBX | |
| Compatibility: | ITU-T (CCITT) G3 ITU-T (T.37) Internet Fax ITU-T (T.38) IP Fax | |
| Modem speed: | Maximum 33.6 Kbps | |
| Resolution: | Standard/detail: | 200 x 100/200 dpi |
| | Maximum: | 400 x 400 dpi (option) |
| Compression method: | MH, MR, MMR, JBIG | |
| Scanning speed: | Less than 0.56 seconds (200 x 100 dpi, A4/SEF) | |
| Memory: | Standard/maximum: | 12/44 MB |
| Memory backup: | Yes | |

OTHER OPTIONS

Platen cover, 50-sheet Automatic Reverse Document Feeder, 100-sheet multi-bypass tray, 2 x 500-sheet paper trays, 2,000-sheet large capacity tray, 125-sheet one-bin tray, 500-sheet finisher, 1,000-sheet finisher, Shift sort tray, Duplex unit, 40 GB Hard Disk Drive, 2nd Super G3 port, Data Overwrite Security Unit, Copy Data Security Unit, File Format Converter, User Account Enhance Unit, Browser Unit, Scanner upgrade (for printer option), Printer upgrade (for RPCS™ printer unit), VM Card (Java™), Key Counter Bracket, PI Board, Bridge Unit, Interchange Unit, Professional software solutions

For availability of models, optional apparatus and software, please consult your local Ricoh supplier.

The Copier
MALAYSIA SDN BHD
YOUR BUSINESS PARTNER
03 6140 4688 / 6141 4688
Hotline: 1700 81 4588
www.thecopier.com.my



ISO9001: 2000 certified
ISO14001 certified

Ricoh believes in conserving the earth's precious natural resources. This brochure is printed on environmentally friendly paper: 50% recycled fibres, 50% chlorine free bleached pulp.

All brand and/or product names are trademarks of their respective owners.

Specifications and external appearance are subject to change without notice. The colour of the actual product may vary from the colour shown in the brochure.

Copyright © 2006 Ricoh Europe B.V. All rights reserved. This brochure, its contents and/or layout may not be modified and/or adapted, copied in part or in whole and/or incorporated into other works without the prior written permission of Ricoh Europe B.V.

RICOH